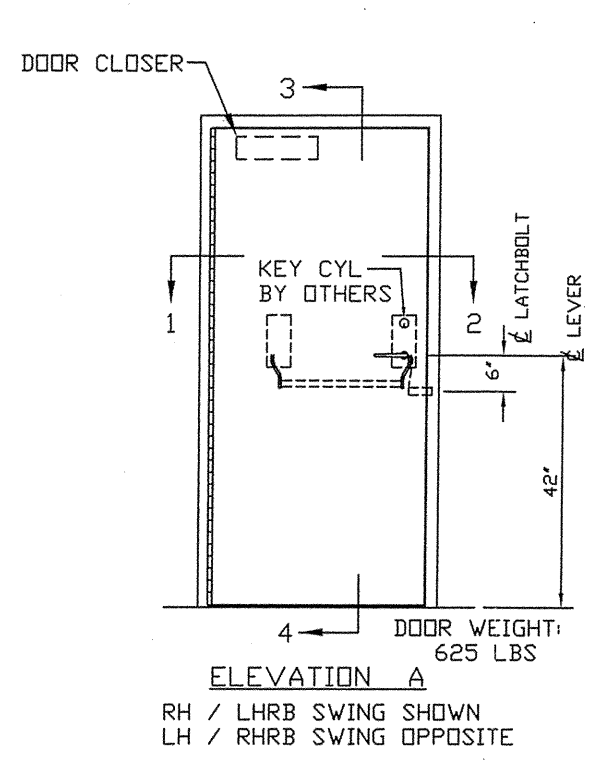
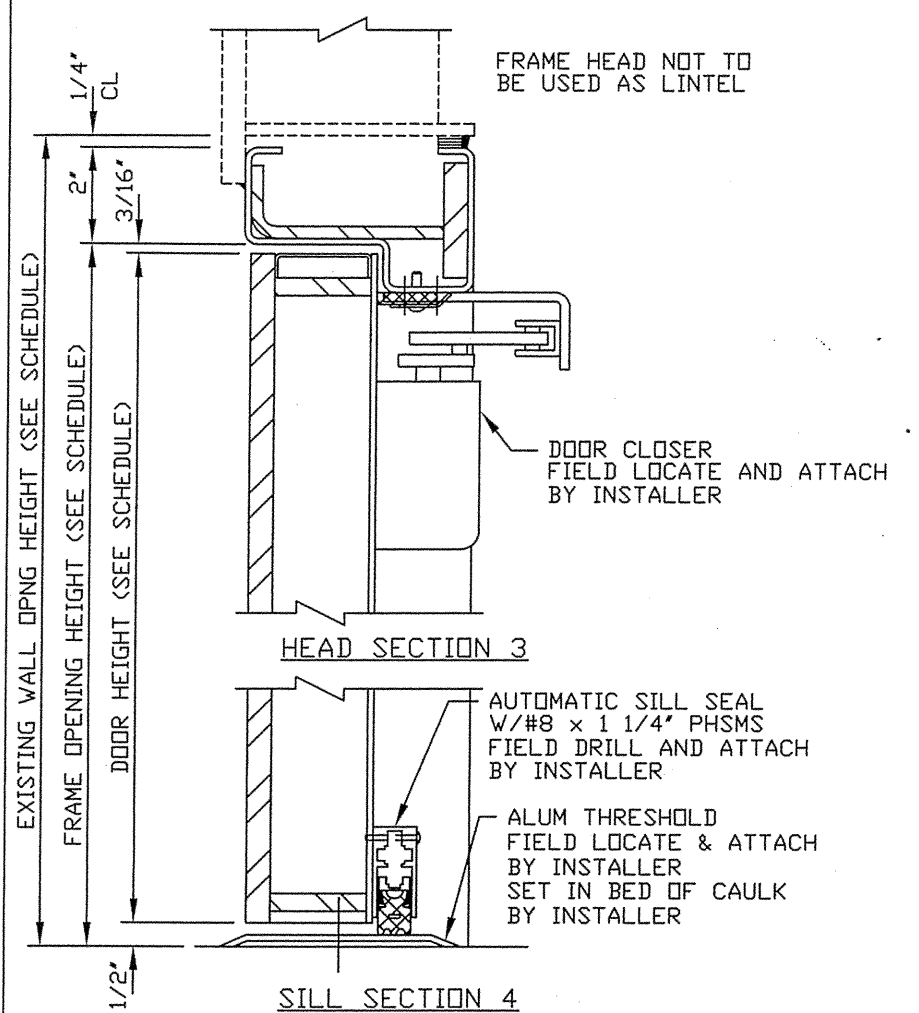
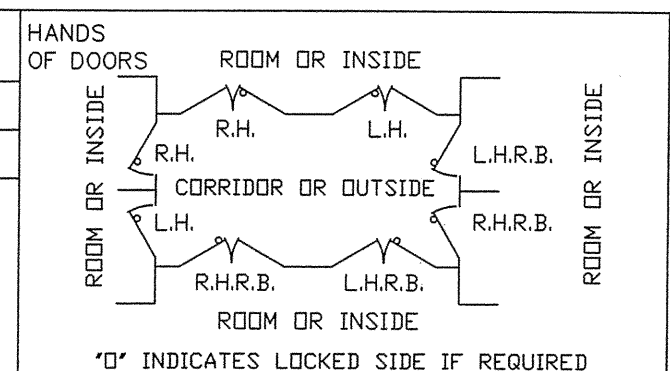


| QUAN. | MARK NO | HAND | LOCATION | | EXISTING WALL OPNG | | FRAME OPNG | | DOOR SIZE | | DOOR ELEV | SECTIONS | | | | REMARKS | |
|-------|---------|------|------------|-----------|--------------------|---------|------------|--------|-----------|----------|-----------|----------|--------|------|------|---------|--|
| | | | HINGE SIDE | STOP SIDE | WIDTH | HEIGHT | WIDTH | HEIGHT | WIDTH | HEIGHT | | HINGE | STRIKE | HEAD | SILL | | |
| 1 | SGL | 1 | RHRB | EXTERIOR | INTERIOR | 40 1/4" | 84 1/4" | 36" | 82" | 35 5/16" | 81 5/16" | A | 1 | 2 | 3 | 4 | |
| | | | VERIFY | | | | | | | | | | | | | | |



IMPORTANT NOTE:
WALL MUST BE CAPABLE OF SUPPORTING 74.8 LB/IN PER JAMB IN THE SEATING DIRECTION AND UNSEATING CONCENTRATED LOADS AS FOLLOWS:
AT LATCHBOLTS 4099 LBS
AT HINGE 34.3 LBS/IN

- FRAME INSTALLATION**
1. PROPERLY BRACE AND SUPPORT FRAME DURING INSTALLATION
 2. JAMBS MUST BE PLUMB
 3. HEAD MUST BE LEVEL
 4. ALL DIMENSIONS TO BE WITHIN 1/16"
 5. DIAGONAL DIMENSIONS TO BE TO BE WITHIN 1/8"

BALLISTIC LEVEL:

AMMUNITION: CAL. .30AP, M2, 166gr
SHOT SPACING: 1 SHOT ON 12" SQUARE
AVG VELOCITY: 2850 FT/SEC
RANGE TO TARGET: 50FT

AMMUNITION: CAL. 7.62, M80 BALL, 150gr
SHOT SPACING: 5 SHOTS ON 4 1/2" SQUARE
AVG VELOCITY: 2900 FT/SEC
RANGE TO TARGET: 15FT

- NOTES:**
1. DESIGN PRESSURE: 4.3 PSI PEAK REFLECTIVE SEATING PRESSURE FOR 31.7 MILLISECONDS W/ REBOUND AS CALCULATED
 2. BALLISTIC CERTIFICATION: PDI WILL FABRICATE THESE UNITS UTILIZING STEELS TESTED BY HP WHITE LABORATORIES TO THE BALLISTIC LEVELS SHOWN
 3. FIRE RATING: NONE
 4. FINISH: STD GREY PRIMER
 5. HARDWARE BY PDI:
 - (1) CONTINUOUS HINGE x DOOR HEIGHT 8GA. LEAVES x 3/8" DIA. PIN x 6" OPEN WIDTH x STN STL FINISH.
 - (1) SH-153PC 1 PT HORIZONTAL HARDWARE LEVER x PANIC BAR x KEY CYLINDER (PREP) x SS TRIM x US32D FINISH FUNCTION: BHMA 09 (SIM TO STOREROOM)
 - (1) YALE #4400 DOOR CLOSER x PA x ALUM FIN
 - (1) PDI H-280W WEATHERSTRIP x USP FINISH
 - (1) PEMKO #271A THRESHOLD x ALUM
 - (1) PEMKO #4301CRL AUTO DOOR BTM x ALUM
 6. HARDWARE BY OTHERS:
 - (1) MORTISED KEY CYLINDER

| DATE | MK | DESCRIPTION | BY |
|------|----|-------------|----|
| | | | |

REVISIONS

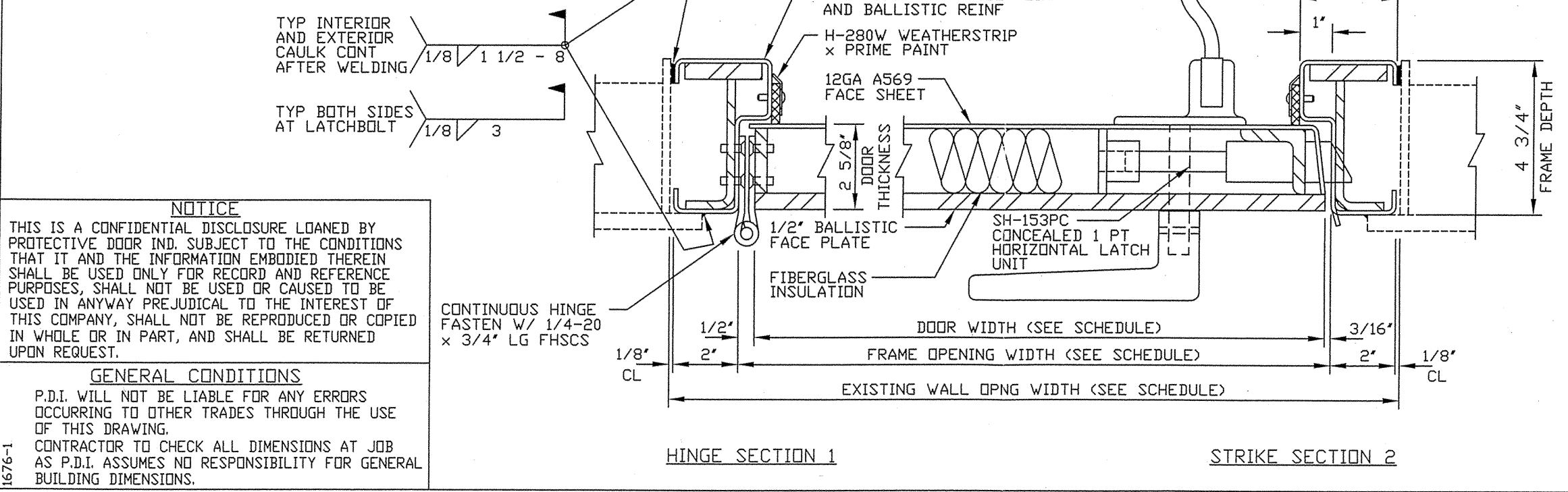
CUSTOMER:

PROJECT: E

PROTECTIVE DOOR INDUSTRIES
HARVEY, ILLINOIS 60426

TITLE DB-XB SGL FLUSH BLAST RESISTANT DOOR AND FRAME

| | | | |
|---------|---------|---------|---|
| DWG BY | LF | CHKD BY | |
| DATE | 5/2/07 | DATE | |
| SCALE | | QA | |
| DWG NO. | 1676-07 | SHT NO. | 1 |



NOTICE

THIS IS A CONFIDENTIAL DISCLOSURE LOANED BY PROTECTIVE DOOR IND. SUBJECT TO THE CONDITIONS THAT IT AND THE INFORMATION EMBODIED THEREIN SHALL BE USED ONLY FOR RECORD AND REFERENCE PURPOSES, SHALL NOT BE USED OR CAUSED TO BE USED IN ANYWAY PREJUDICIAL TO THE INTEREST OF THIS COMPANY, SHALL NOT BE REPRODUCED OR COPIED IN WHOLE OR IN PART, AND SHALL BE RETURNED UPON REQUEST.

GENERAL CONDITIONS

P.D.I. WILL NOT BE LIABLE FOR ANY ERRORS OCCURRING TO OTHER TRADES THROUGH THE USE OF THIS DRAWING.

CONTRACTOR TO CHECK ALL DIMENSIONS AT JOB AS P.D.I. ASSUMES NO RESPONSIBILITY FOR GENERAL BUILDING DIMENSIONS.

PLOT SCALE 1"=4'

MASTER